



**THE TRINITY RIVER VISION/
GATEWAY PARK / PANTHER ISLAND**
Flood Control Project Update

Quarterly Project Status Report | January 2018



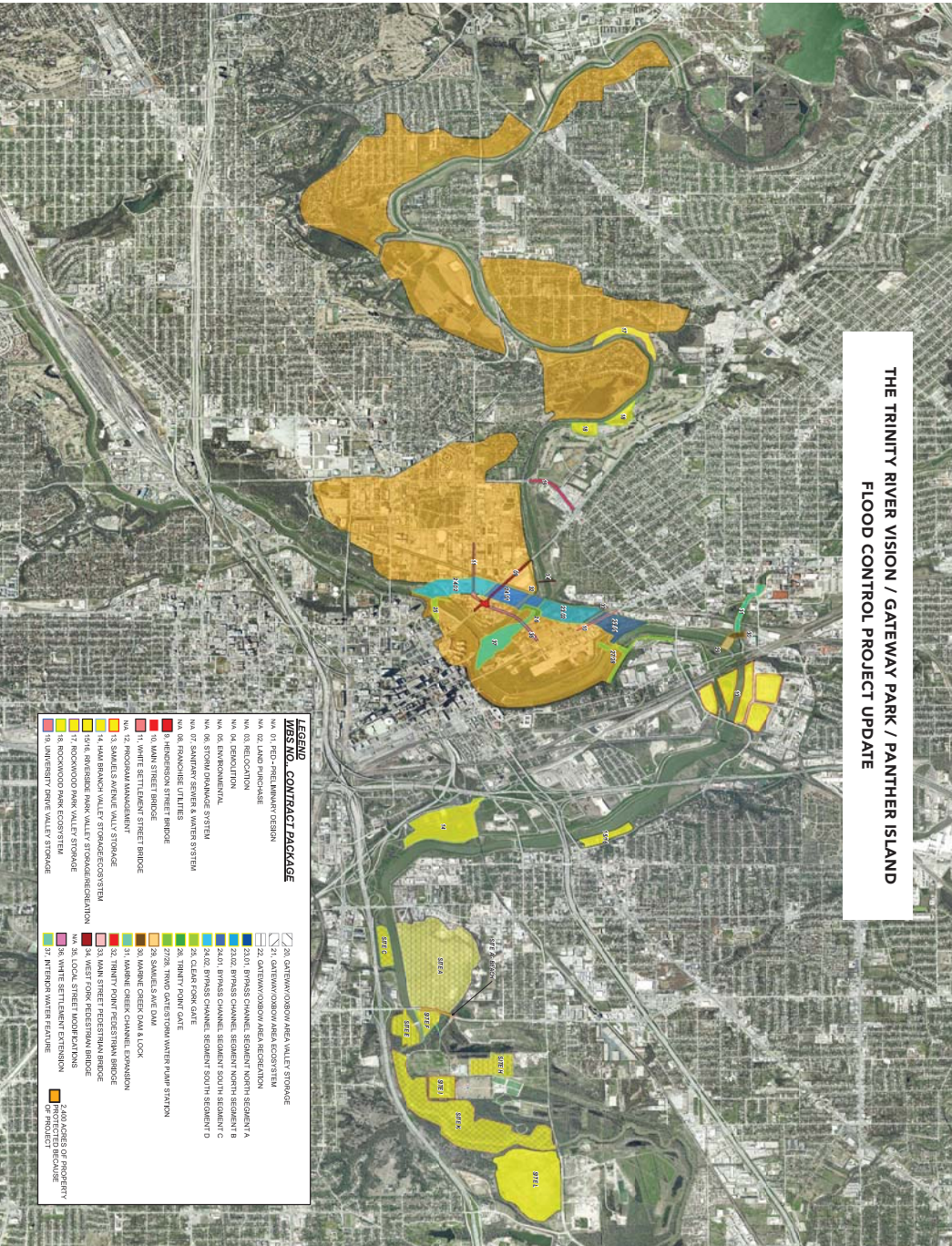
Concrete being poured on one of eight signature V-piers along the new White Settlement Bridge. Dry-land construction of the bridges in advance of the routing of the Trinity River is a significant cost-saving component of project.

TRINITY RIVER VISION FLOOD CONTROL PROJECT

The Trinity River Vision Flood Control Project is a multi-agency collaboration between the Tarrant Regional Water District, Federal Corps of Engineers, the City of Fort Worth, and Tarrant County. The project was started in 2004 and expanded in 2009 (adding the Gateway Park flood water retention and recreation corridor). The key component is a 1.5 mile long rerouting of the river just north of the Tarrant County Courthouse. When completed, the Trinity River Vision/Gateway Park/Panther Island Flood Control Project will deliver: flood protection, environmental clean up of the Trinity River corridor, and recreation for more than 3,000 acres of Tarrant County land.

Trinity River Vision Authority
307 W. 7th St. #100,
Fort Worth, TX 76102
Phone: (817) 698-0700
TrinityRiverVision.org

**THE TRINITY RIVER VISION / GATEWAY PARK / PANTHER ISLAND
FLOOD CONTROL PROJECT UPDATE**

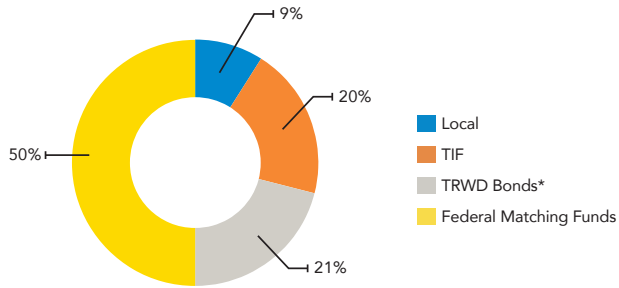


PROJECT FUNDING SPLIT WITH TRWD BOND OPTION

FUNDING	ESTIMATE	PERCENT PARTICIPATION	RECEIVED	PERCENT COMPLETE
LOCAL	\$102,000,000	9%	\$102,000,000	100.00%
TIF	\$233,044,000	20%	\$233,044,000	100.00%
TRWD Bonds *	\$247,739,606	21%	\$0	0.00%
Federal Matching Funds	\$585,826,817	50%	\$107,967,300	18.43%
TOTAL	\$1,168,610,423	100%	\$443,011,300	37.91%

* Bonds issued and guaranteed by TRWD, with Debt Service paid by TIF revenues.

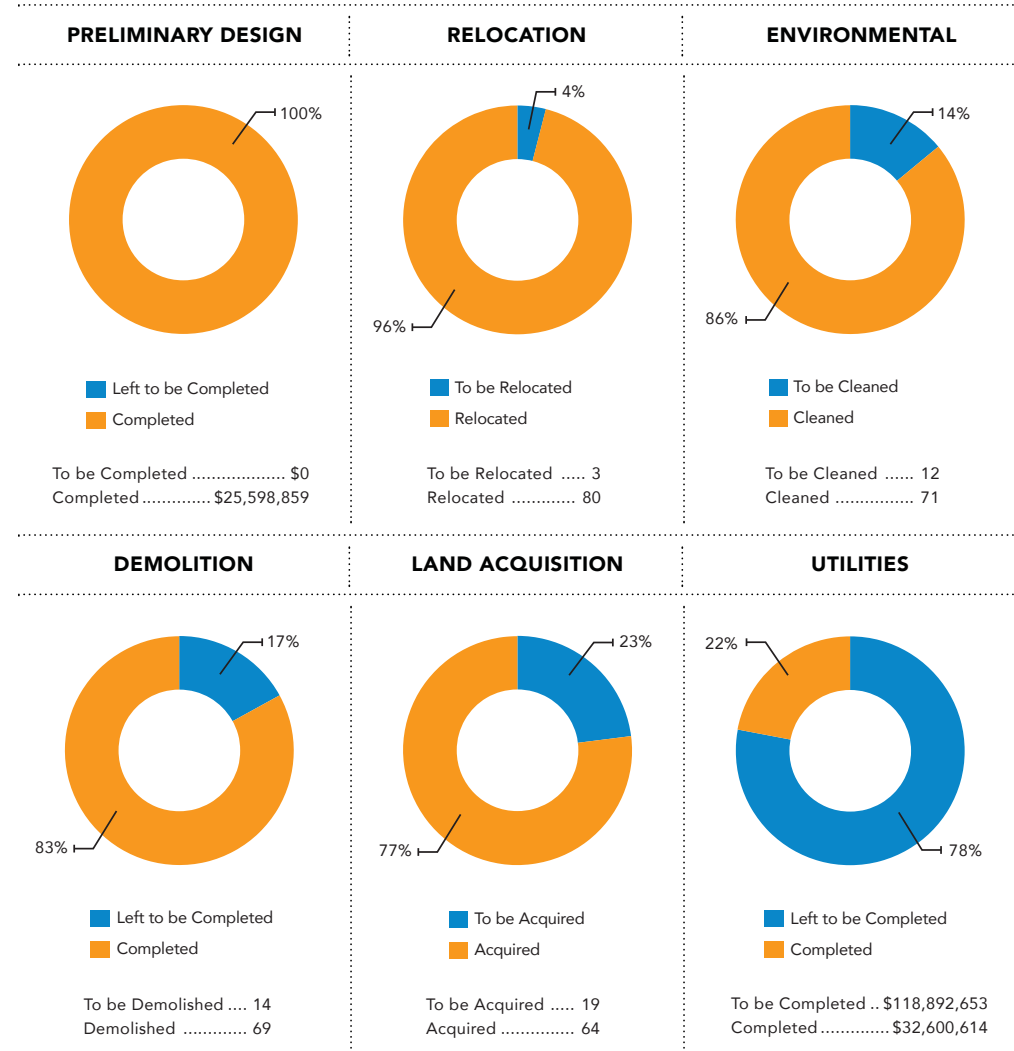
**THE TRINITY RIVER VISION/
GATEWAY PARK /
PANTHER ISLAND
FLOOD CONTROL PROJECT**



PHASE COMPLETION WITH TRWD BOND OPTION

		PROJECT COST	% OF PROJECT COMPLETE	COMPLETION DATE
Phase 1	Land Acquisition, Relocation, Environmental Remediation of the Trinity River Corridor, Utility Relocation and Project Design	\$394 M	56%	2026
Phase 2	Three new traffic bridges over rerouted flood control bypass channel (dry-land construction of bridges to save costs)	\$81 M	44%	2020
Phase 3	Construction of floodwater retention, (valley storage) and recreation components along the Trinity River Corridor	\$155 M	30%	2025
Phase 4	Re-routing of Trinity River for flood control by constructing a new flood control bypass channel and levee system	\$333 M	13%	2025
Phase 5	Construction of flood gates (3), storm water pump station, and flood management dam	\$205 M	0.32%	2028

STATUS OF PHASE 1



PROJECT COSTS LOCAL VS. FEDERAL MATCHING

PROJECT COST CATEGORIES	2017 Estimate	Project Inception thru October 31, 2017	Variance
LOCAL			
Land Purchase	\$ 103,521,552	\$ 73,164,889	\$ 30,356,663
Relocation	\$ 59,790,856	\$ 51,882,440	\$ 7,908,416
Demolition	\$ 15,802,874	\$ 6,443,381	\$ 9,359,493
Environmental	\$ 38,098,850	\$ 32,640,409	\$ 5,458,441
Sanitary Sewer & Water System	\$ 93,347,037	\$ 19,208,171	\$ 74,138,866
Franchise Utilities	\$ 20,169,474	\$ 9,974,308	\$ 10,195,166
Storm Drainage System	\$ 37,976,756	\$ 3,418,135	\$ 34,558,621
Ped.Preliminary Design	\$ 18,225,972	\$ 18,225,972	\$ -
Program Management	\$ 30,297,476	\$ 15,380,253	\$ 14,917,223
Bypass Channel - Local Share	\$ 21,834,669	\$ 3,412,092	\$ 18,422,577
Local Street Modifications	\$ 5,521,441	\$ 3,298,700	\$ 2,222,741
Bridge Costs Local Share	\$ 33,973,387	\$ 33,973,387	\$ -
Marine Creek Lock/ Stockyards Connection	\$ 10,245,376	\$ -	\$ 10,245,376
Gateway Park Recreation Improvements	\$ 6,668,614	\$ -	\$ 6,668,614
Cash Match	\$ 50,900,362	\$ 31,647,074	\$ 19,253,288
Contingency	\$ 36,408,910	\$ -	\$ 36,408,910
TOTAL LOCAL	\$ 582,783,606	\$ 302,669,211	\$ 280,114,395
FEDERAL MATCHING			
Ped.Preliminary Design	\$ 7,372,888	\$ 7,372,888	\$ -
Gateway - Oxbow Valley Storage	\$ 53,802,333	\$ 33,444,834	\$ 20,357,499
Gateway - Oxbow Ecosystem	\$ 37,893,802	\$ -	\$ 37,893,802
Samuel Avenue Valley Storage	\$ 8,794,726	\$ 8,367,497	\$ 427,229
Ham Branch Valley Storage	\$ 4,873,830	\$ 2,513,865	\$ 2,359,965
Storm Water Pump Station	\$ 10,684,264	\$ -	\$ 10,684,264
Bypass Channel - South	\$ 93,756,128	\$ 9,339,150	\$ 84,416,978
Bypass Channel - North	\$ 66,463,569	\$ 9,260,985	\$ 57,202,584
Main Street Pedestrian Bridge	\$ 7,827,313	\$ -	\$ 7,827,313
Trinity Point Pedestrian Bridge	\$ 7,786,916	\$ -	\$ 7,786,916
Rockwood Park Valley Storage	\$ 13,274,288	\$ 723,046	\$ 12,551,242
Rockwood Park Ecosystem	\$ 657,948	\$ -	\$ 657,948
University Drive Valley Storage	\$ 8,591,009	\$ 340,659	\$ 8,250,350
TRWD Gate	\$ 34,292,995	\$ 327,595	\$ 33,965,400
Clear Fork Gate	\$ 29,351,787	\$ 335,275	\$ 29,016,512
Trinity Point Gate	\$ 25,056,717	\$ -	\$ 25,056,717
Samuels Ave. Dam	\$ 65,679,054	\$ -	\$ 65,679,054
Marine Creek Dam	\$ 14,330,053	\$ -	\$ 14,330,053
Marine Creek Channel Expansion	\$ 5,519,836	\$ -	\$ 5,519,836
West Fork Pedestrian Bridge	\$ 2,858,715	\$ -	\$ 2,858,715
Interior - Valley Storage	\$ 28,570,079	\$ -	\$ 28,570,079
Program Management	\$ 1,139,538	\$ 1,139,538	\$ -
Riverside Park Valley Storage	\$ 6,325,299	\$ 5,196,376	\$ 1,128,923
Riverside Park Recreation	\$ 524,336	\$ -	\$ 524,336
Less Local Cash Match	\$ (45,900,363)	\$ (31,647,074)	\$ (14,253,289)
Henderson Street Bridge	\$ 17,598,353	\$ 1,142,481	\$ 16,455,872
White Settlement Bridge	\$ 17,792,487	\$ 81,857	\$ 17,710,630
Main Street Bridge	\$ 11,414,779	\$ 581,168	\$ 10,833,611
Contingency	\$ 49,494,138	\$ -	\$ 49,494,138
TOTAL FEDERAL MATCHING	\$ 585,826,817	\$ 48,520,140	\$ 537,306,677
TOTAL PROJECT COSTS	\$ 1,168,610,423	\$ 351,189,351	\$ 817,421,072

PROJECT SCHEDULE

PROJECT COMPONENTS	2018	2019	2020	2021	2022	2023	2024	2025	2026	2027	2028
Land Acquisition Bypass Channel											
Land Acquisition Gateway Valley Storage											
Utilities Sanitary Sewer & Water											
Utilities Storm Drainage System											
Bridge Completion White Settlement											
Bridge Completion Main Street											
Bridge Completion Henderson											
Bypass Channel North											
Bypass Channel South											
Valley Storage Gateway											
Valley Storage Rockwood Park/ University											
Gates (3)											
Dam & Locks											
Town Lake											